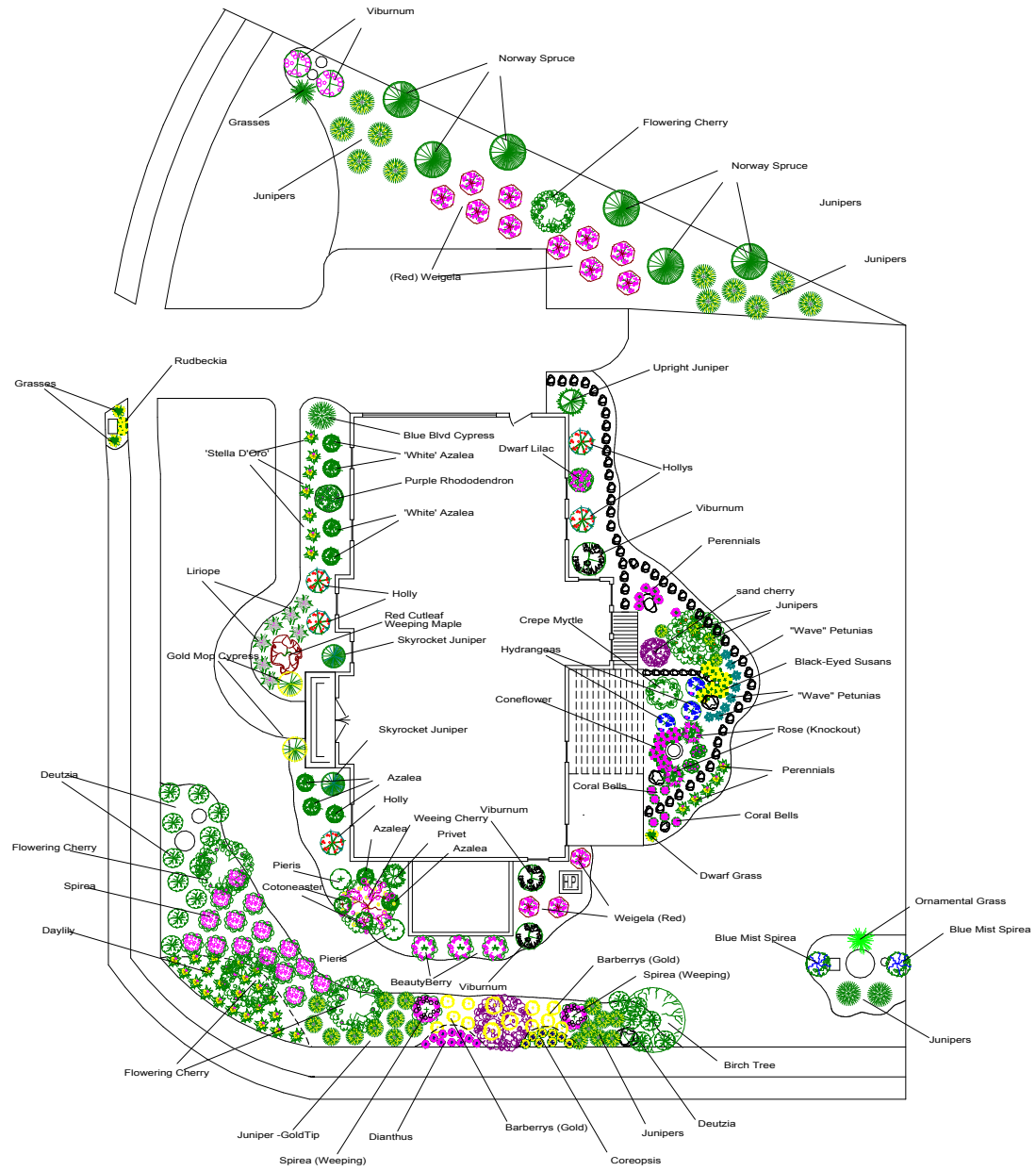


Plant Listing - Common Name & Amount

| | |
|----------------------------|----|
| Juniper-Hollywood | 1 |
| Azalea-White | 9 |
| Rhododendron-Purple | 1 |
| Holly | 5 |
| Japanese Maple-Weeping Rtd | |
| Spruce Alberta | 2 |
| False Cypress-Gold Mop | 2 |
| Daylily-Stella-D-Oro | 35 |
| Liriope | 7 |
| Privet-Regal's | 1 |
| Pieris | 2 |
| Cherry-Snow Fountain | 1 |
| Cotoneaster-Cranberry | 2 |
| Beauty Berry | 3 |
| Viburnum-Dwarf Cranberry | 3 |
| Weigela-Java Red | 13 |
| Purple Leaf Plum | 2 |
| Birch-Whitespire | 1 |
| Dwarf Slender Deutzia | 17 |
| Spirea-Shirobana | 2 |
| Spirea-Anthony Waterer | 15 |
| Cherry-Yeodensis | 4 |
| Barberry-Golden | 13 |
| Juniper-Gold Tip | 32 |
| Juniper-Sea Green | 2 |
| Blue Mist Shrub | 2 |
| Grass-Fountain Grass | 1 |
| Spruce-Norway | 6 |
| Viburnum-Korean Spice | 2 |
| Grass-Maiden Grass | 1 |
| EuonColoratus | 1 |
| Dianthus | 10 |
| Coreopsis | 8 |
| Arborvitae-Globe | 1 |
| Miss Kim Lilac | 1 |
| Bradford Pear | 1 |
| perennials | 6 |
| Hydrangea-Lacecaps | 3 |
| Grass-Pampas | 3 |
| DavisStone | 50 |
| Black- Eyed Susan | 8 |
| Crepe Myrtle | 1 |
| coneflower | 4 |
| wave petunia | 8 |
| Rose Knockout | 2 |
| Coral Bells-Pink | 6 |
| Silver Mound | 2 |



| | | |
|----------|--------------|-----------------------------------|
| Date | Mar-May 09 | Almost Perfect Landscaping |
| Design | R. Straining | Custom Landscape Design & Imaging |
| Drawn by | R. Straining | (CAD overview) |
| Scale | 1/8" = 1' | Landscape Layout |